

## FINITURE E COLORI DISPONIBILI

FINISHES AND COLOURS AVAILABLE | FINITIONS ET COLORIS DISPONIBLES

### Cat. A

#### POLI

100% Polipropilene FR.  
Peso: 250 gr/m<sup>2</sup>  
Martindale 50.000 cicli  
Ignifugo classe 1



100% Polypropylene FR.  
Weight: 250 gr/m<sup>2</sup>  
Martindale 50.000 turns  
Fire-retardant class 1 (one)

100% Polypropylene FR.  
Poids: 250 gr/m<sup>2</sup>  
Martindale 50.000 cycles  
Ignifuge classe 1



**475 - Grigio**  
Grey | Gris



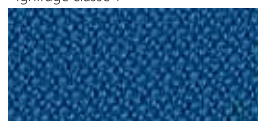
**476 - Grigio melange**  
Melange grey | Gris melange



**477 - Nero**  
Black | Noir



**478 - Verde chiaro**  
Light green | Vert clair



**480 - Azzurro**  
Azure | Azur



**483 - Rosso**  
Red | Rouge



**481 - Blu**  
Blue | Bleu

**IT**

Il codice a tre cifre individua il colore della stoffa applicata nell'articolo / componente. Ogni partita di tessuto può presentare variazioni di tonalità rispetto sia al campionario sia ad elementi prodotti in tempi diversi.

Leggere differenze di colore tra un lotto di produzione e l'altro, devono essere considerate nella norma. I colori stampati sono indicativi e potrebbero essere sostituiti o modificati nel tempo a discrezione di LAS.

**EN**

The three-digit code identifies the colour of the fabric for each item / component. Each fabric batch can show colour differences compared to the fabric samples and to the products manufactured at different times.

Slight colour differences from lot to lot must be considered within commercial tolerances. Please consider that the colours in these pages are printed, so they can't be considered as real. They can be changed or modified in the life time by LAS.

**FR**

Le code à trois chiffres identifie la couleur du tissu appliqué dans l'article / composant. Chaque morceau de tissu peut avoir des variations de ton en ce qui concerne à la fois l'échantillon et les éléments produits à des moments différents.

De légères différences de couleur entre un lot de production et un autre sont absolument normales. Les couleurs imprimées sont approximatives et peuvent être changées ou bien modifiés à jugement de LAS.

## Cat. B

### ECO-PELLE



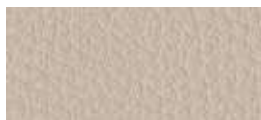
Composizione fibrosa:  
65% Poliestere - 35% Cotone  
Composizione globale:  
85% PVC - 10% Poliestere - 5% Cotone  
Peso: 600 gr/m<sup>2</sup>  
Martindale 51.200 cicli  
Ignifugo classe 1

Fibrous composition  
65% Polyester - 35% Cotton  
Global composition:  
85% PVC - 10% Polyester - 5% Cotton  
Weight: 600 gr/m<sup>2</sup>  
Martindale 51.200 turns  
Fire-retardant class 1 (one)

Composition fibreuse:  
**65% Polyester - 35% Coton**  
**Composition globale:**  
85% PVC - 10% Polyester - 5% Coton  
Poids: 600 gr/m<sup>2</sup>  
Martindale 51.200 cycles  
Ignifuge classe 1



**503 - Bianco**  
White | Blanc



**507 - Avorio**  
Ivory | Ivoire



**511 - Verde acido**  
Acid green | Vert acide



**513 - Avio**  
Navy blue | Bleu avio



**516 - Rosso**  
Red | Rouge



**518 - Acqua**  
Water | Eau



**508 - Tabacco**  
Tobacco | Tabac



**512 - Muschio**  
Moss green | Vert mousse



**504 - Grigio**  
Grey | Gris



**519 - Fango**  
Mud | Boue



**505 - Ardesia**  
Slate | Ardoise



**509 - Marrone**  
Brown | Marron



**506 - Nero**  
Black | Noir

## Cat. B

### CREPE



100% Poliestere FR-TREVIRA CS  
Peso: 330 gr/m<sup>2</sup>  
Martindale 100.000 cicli  
Ignifugo classe 1

100% Polyester FR-TREVIRA CS  
Weight: 330 gr/m<sup>2</sup>  
Martindale 100.000 turns  
Fire-retardant class 1 (one)

100% Polyester FR-TREVIRA CS  
Poids: 330 gr/m<sup>2</sup>  
Martindale 100.000 cycles  
Ignifuge classe 1



**522 - Grigio perla**  
Light grey | Gris clair



**525 - Avorio**  
Ivory | Ivoire



**528 - Verde acido**  
Acid green | Vert acide



**530 - Artico**  
Arctic | Arctique



**534 - Giallo**  
Yellow | Jaune



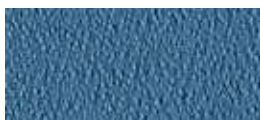
**523 - Grigio scuro**  
Dark grey | Gris foncé



**526 - Nocciola**  
Hazel | Noisette



**529 - Petrolio**  
Petroleum | Pétrole



**531 - Celeste**  
Light blue | Bleu clair



**535 - Arancio**  
Orange | Orange



**524 - Nero**  
Black | Noir



**527 - Malto**  
Malt | Malt



**532 - Cobalto**  
Cobalt | Cobalt



**536 - Vinaccio**  
Wine red | Rouge vin



**533 - Blu**  
Blue | Bleu



**537 - Rosso**  
Red | Rouge



**538 - Prugna**  
Plum | Prune

**Cat. C****TIME**

100% Poliestere RICICLATO GRS  
 Peso: 350 gr/m<sup>2</sup>  
 Martindale 100.000 cicli  
 Ignifugo classe 1

100% Polyester RECYCLED GRS  
 Weight: 350 gr/m<sup>2</sup>  
 Martindale 100.000 turns  
 Fire-retardant class 1 (one)

100% Polyester RECYCLÉ GRS  
 Poids: 350 gr/m<sup>2</sup>  
 Martindale 100.000 cycles  
 Ignifuge classe 1



**C01 - Grigio**  
 Grey | Gris



**C02 - Beige**  
 Beige | Beige



**C04 - Verdino**  
 Light green | Vert clair



**C06 - Avio**  
 Navy blue | Bleu avio



**C09 - Tramonto**  
 Sunset | Coucher



**C13 - Antracite**  
 Anthracite | Anthracite



**C03 - Tortora**  
 Grey beige | Gris tourterelle



**C05 - Verde**  
 Green | Vert



**C07 - Oltremare**  
 Ultramarine | Outremer



**C10 - Arancio**  
 Orange | Orange



**C08 - Petrolio**  
 Petroleum | Pétrole



**C11 - Mattone**  
 Brick red | Rouge brique



**C12 - Melograno**  
 Pomegranate | Grenade

**Cat. C****ONE**

100% Poliestere RICICLATO  
 Peso: 350 gr/m<sup>2</sup>  
 Martindale 100.000 cicli  
 Ignifugo classe 1

100% Polyester RECYCLED  
 Weight: 350 gr/m<sup>2</sup>  
 Martindale 100.000 turns  
 Fire-retardant class 1 (one)

100% Polyester RECYCLÉ  
 Poids: 350 gr/m<sup>2</sup>  
 Martindale 100.000 cycles  
 Ignifuge classe 1



**C25 - Grigio**  
 Grey | Gris



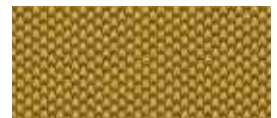
**C28 - Tortora**  
 Grey beige | Gris tourterelle



**C29 - Verde acido**  
 Acid green | Vert acide



**C32 - Pervinca**  
 Periwinkle | Pervenche



**C35 - Ocra**  
 Ocher | Ocre



**C26 - Antracite**  
 Anthracite | Anthracite



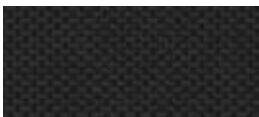
**C30 - Verde**  
 Green | Vert



**C33 - Avio**  
 Navy blue | Bleu avio



**C36 - Rosso**  
 Red | Rouge



**C27 - Nero**  
 Black | Noir



**C31 - Petrolio**  
 Petroleum | Pétrole



**C34 - Blu**  
 Blue | Bleu



**C37 - Bordeaux**  
 Bordeaux | Bordeaux

## Cat. D

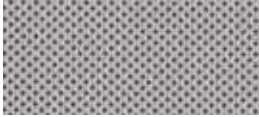
### STRETCH



100% Poliestere FR RICICLATO  
Peso: 340 gr/m<sup>2</sup>  
Martindale 50.000 cicli  
Ignifugo classe 1

100% Polyester FR RECYCLED  
Weight: 340 gr/m<sup>2</sup>  
Martindale 50.000 turns  
Fire-retardant class 1 (one)

100% Polyester FR RECYCLÉ  
Poids: 340 gr/m<sup>2</sup>  
Martindale 50.000 cycles  
Ignifuge classe 1



**586 - Grigio**  
Grey | Gris



**589 - Tortora**  
Grey beige | Gris tourterelle



**591 - Verde acido**  
Acid green | Vert acide



**593 - Azzuro sky**  
Sky blue | Bleu sky



**595 - Giallo fnesia**  
Freesia yellow | Jaune freesia



**587 - Antracite**  
Anthracite | Anthracite



**592 - Verde bosco**  
Wood green | Vert forêt



**594 - Blu**  
Blue | Bleu



**597 - Rosso**  
Red | Rouge



**588 - Nero**  
Black | Noir

## Cat. D

### MELANGE



100% Poliestere FR RICICLATO  
Peso: 340 gr/m<sup>2</sup>  
Martindale 50.000 cicli  
Ignifugo classe 1

100% Polyester FR RECYCLED  
Weight: 340 gr/m<sup>2</sup>  
Martindale 50.000 turns  
Fire-retardant class 1 (one)

100% Polyester FR RECYCLÉ  
Poids: 340 gr/m<sup>2</sup>  
Martindale 50.000 cycles  
Ignifuge classe 1



**603 - Cenere**  
Ash | Cendre



**607 - Nocciola**  
Hazel | Noisette



**601 - Salvia**  
Sage green | Vert Saugé



**612 - Azzurro**  
Azure | Azur



**614 - Petunia**  
Petunia | Pétunia



**604 - Grigio**  
Grey | Gris



**608 - Verde acido**  
Acid green | Vert acide



**602 - Blu**  
Blue | Bleu



**605 - Fumo**  
Smoke | Fumée



**609 - Muschio**  
Moss green | Vert mousse



**600 - Antracite**  
Anthracite | Anthracite



**610 - Verdone**  
Dark green | Vert foncé

## Cat. D

### TREVI



100% Poliestere FR - TREVIRA CS  
Peso: 450 gr/m<sup>2</sup>  
Martindale 70.000 cicli  
Ignifugo classe 1

100% Polyester FR - TREVIRA CS  
Weight: 450 gr/m<sup>2</sup>  
Martindale 70.000 turns  
Fire-retardant class 1 (one)

100% Polyester FR - TREVIRA CS  
Poids: 450 gr/m<sup>2</sup>  
Martindale 70.000 cycles  
Ignifuge classe 1



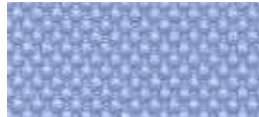
**624 - Nero**  
Black | Noir



**617 - Avorio**  
Ivory | Ivoire



**618 - Salvia**  
Sage green | Vert Sauge



**619 - Cesio**  
Cesium | Césium



**620 - Pesca**  
Peach | Pêche



**625 - Tortora**  
Grey beige | Gris tourterelle



**632 - Blu**  
Blue | Bleu



**634 - Mattone**  
Brick red | Rouge brique



**636 - Rosso**  
Red | Rouge



**638 - Bordeaux**  
Bordeaux | Bordeaux

**Cat. E****LANA**

75% Lana - 25% Poliammide  
Peso: 335 gr/m<sup>2</sup>  
Martindale 100.000 cicli

75% Wool - 25% Polyamide  
Weight: 335 gr/m<sup>2</sup>  
Martindale 100.000 turns

75% Laine - 25% Polyamide  
Poids: 335 gr/m<sup>2</sup>  
Martindale 100.000 cycles



**642 - Grigio chiaro**  
Light grey | Gris clair



**645 - Tortora**  
Grey beige | Gris tourterelle



**647 - Verde acido**  
Acid green | Vert acide



**649 - Artico**  
Arctic | Arctique



**643 - Grigio scuro**  
Dark grey | Gris foncé



**648 - Muschio**  
Moss green | Vert mousse



**650 - Malibú**  
Malibu | Malibu



**652 - Avio**  
Navy blue | Bleu avio

**Cat. E****NAUTILUS**

100% Poliestere riciclato - certificato  
SEAQUAL  
Peso: 410 gr/m<sup>2</sup>  
Martindale 100.000 cicli

100% Recycled Polyester - SEAQUAL  
Certified  
Weight: 410 gr/m<sup>2</sup>  
Martindale 100.000 turns

100% Recycled Polyester - SEAQUAL  
Certified  
Poids: 410 gr/m<sup>2</sup>  
Martindale 100.000 cycles



**E01 - Pietra**  
Stone | Pierre



**E04 - Acqua**  
Water | Eau



**E08 - Ceruleo**  
Cerulean | Céruléen



**E12 - Melograno**  
Pomegranate | Grenade



**E02 - Grigio**  
Grey | Gris



**E05 - Verde**  
Green | Vert



**E09 - Azzurro**  
Azure | Azur



**E13 - Bordeaux**  
Bordeaux | Bordeaux



**E03 - Nero**  
Black | Noir



**E06 - Prato**  
Lawn | Pelouse



**E10 - Pervinca**  
Periwinkle | Pervenche



**E07 - Verdone**  
Dark green | Vert foncé



**E11 - Blu**  
Blue | Bleu

## Cat. F

### SEALIFE



100% Poliestere riciclato - certificato  
SEAQUAL  
Peso: 330 gr/m<sup>2</sup>  
Martindale 100.000 cicli  
Ignifugo classe 1

100% Recycled Polyester - SEAQUAL  
Certified  
Weight: 330 gr/m<sup>2</sup>  
Martindale 100.000 turns  
Fire-retardant class 1 (one)

100% Recycled Polyester - SEAQUAL  
Certified  
Poids: 330 gr/m<sup>2</sup>  
Martindale 100.000 cycles  
Ignifuge classe 1



**F01 - Grigio**  
Grey | Gris



**F03 - Fango**  
Mud | Boue



**F04 - Muschio**  
Moss green | Vert mousse



**F06 - Acqua**  
Water | Eau



**F10 - Ocre**  
Ocher | Ocre



**F02 - Nero**  
Black | Noir



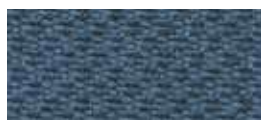
**F05 - Verde**  
Green | Vert



**F07 - Celeste**  
Light blue | Bleu clair



**F11 - Mattone**  
Brick red | Rouge brique



**F08 - Azzurro**  
Azure | Azur



**F12 - Melograno**  
Pomegranate | Grenade



**F09 - Blu**  
Blue | Bleu

## Cat. G

### MIXAGE



100% Trevira CS  
Peso: 400 gr/m<sup>2</sup>  
Martindale 70.000 cicli  
Ignifugo classe 1

100% Trevira CS  
Weight: 400 gr/m<sup>2</sup>  
Martindale 70.000 turns  
Fire-retardant class 1 (one)

100% Trevira CS  
Poids: 400 gr/m<sup>2</sup>  
Martindale 70.000 cycles  
Ignifuge classe 1



**G15 - Grigio**  
Grey | Gris



**G17 - Beige**  
Beige | Beige



**G19 - Muschio**  
Moss green | Vert mousse



**G21 - Oltremare**  
Ultramarine | Outremer



**G26 - Giallo**  
Yellow | Jaune



**G16 - Nero**  
Black | Noir



**G18 - Tortora**  
Grey beige | Gris tourterelle



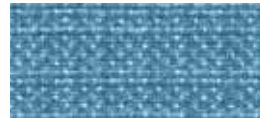
**G20 - Verde**  
Green | Vert



**G22 - Celeste**  
Light blue | Bleu clair



**G27 - Ambra**  
Amber | Ambre



**G23 - Cielo**  
Sky | Ciel



**G24 - Avio**  
Navy blue | Bleu avio



**G25 - Blu**  
Blue | Bleu

## Cat. G

### SPAZIO



100% Poliestere RICICLATO  
Peso: 635 gr/m<sup>2</sup>  
Martindale 50.000 cicli  
Ignifugo classe 1

100% Polyester RECYCLED  
Weight: 635 gr/m<sup>2</sup>  
Martindale 50.000 turns  
Fire-retardant class 1 (one)

100% Polyester RECYCLÉ  
Poids: 635 gr/m<sup>2</sup>  
Martindale 50.000 cycles  
Ignifuge classe 1



**G35 - Grigio**  
Grey | Gris



**G38 - Verde acido**  
Acid green | Vert acide



**G41 - Pervinca**  
Periwinkle | Pervenche



**G43 - Ocra**  
Ocher | Ocre



**G36 - Antracite**  
Anthracite | Anthracite



**G39 - Verde**  
Green | Vert



**G42 - Blu**  
Blue | Bleu



**G44 - Bordeaux**  
Bordeaux | Bordeaux



**G37 - Nero**  
Black | Noir



**G40 - Petrolio**  
Petroleum | Pétrole

## Cat. G



### POSEIDON

100% Poliestere riciclato - certificato SEAQUAL  
Peso: 500 gr/m<sup>2</sup>  
Martindale 100.000 cicli  
Ignifugo classe 1



100% Recycled Polyester - SEAQUAL Certified  
Weight: 500 gr/m<sup>2</sup>  
Martindale 100.000 turns  
Fire-retardant class 1 (one)

100% Recycled Polyester - SEAQUAL Certified  
Poids: 500 gr/m<sup>2</sup>  
Martindale 100.000 cycles  
Ignifuge classe 1



**G51 - Antracite**  
Anthracite | Anthracite



**G53 - Avorio**  
Ivory | Ivoire



**G55 - Verde**  
Green | Vert



**G56 - Azzurro**  
Azure | Azur



**G58 - Giallo**  
Yellow | Jaune



**G52 - Nero**  
Black | Noir



**G54 - Nocciola**  
Hazel | Noisette



**G57 - Blu**  
Blue | Bleu

## Cat. G

### SUPREME

50% PL-Poliestere / 35% AC-Acetato  
15% PA-Poliammidica  
Peso: 410 gr/m<sup>2</sup>  
Martindale 200.000 cicli  
Ignifugo classe 1



50% PL-Polyester / 35% AC-Acetate  
15% PA-Nylon  
Weight: 410 gr/m<sup>2</sup>  
Martindale 200.000 turns  
Fire-retardant class 1 (one)

50% PL-Polyester / 35% AC-Acetate  
15% PA-Polyamide  
Poids: 410 gr/m<sup>2</sup>  
Martindale 200.000 cycles  
Ignifuge classe 1



**G65 - Grigio**  
Grey | Gris



**G68 - Beige**  
Beige | Beige



**G70 - Muschio**  
Moss green | Vert mousse



**G71 - Piombo**  
Lead | Plomb



**G73 - Ocra**  
Ocher | Ocre



**G66 - Antracite**  
Anthracite | Anthracite



**G69 - Tortora**  
Grey beige | Gris tourterelle



**G72 - Avio**  
Navy blue | Bleu avio



**G74 - Avana**  
Havana | Havane



**G67 - Nero**  
Black | Noir



**G75 - Ruggine**  
Russet | Rouille



**G76 - Rosso**  
Red | Rouge



**GRAIN by Gabriel**

92% Poliestere riciclato post consumo - 8% Poliestere

♻️80% Poliestere riciclato post consumo - 20% Poliestere  
Peso: 439 gr/m<sup>2</sup>  
Martindale 100.000 cicli

92% Post-consumer recycled polyester - 8% Polyester

♻️80% Post-consumer recycled polyester - 20% Polyester  
Weight: 439 gr/m<sup>2</sup>  
Martindale 100.000 turns

92% Polyester recyclé post-consommation - 8% Polyester

♻️80% Polyester recyclé post-consommation - 20% Polyester  
Poids: 439 gr/m<sup>2</sup>  
Martindale 100.000 cycles



**I01 - Avio**  
Navy blue | Bleu avio



**I05 - Oro**  
Gold | Or



**I02 - Jeans**  
Jeans | Jeans



**I06 - Ocra**  
Ocher | Ocre



**I03 - Cesio**  
Cesium | Césium



**I07 - Nudo**  
Nude | Nude



**I04 - Sera**  
Evening | Soir



**I08 - Cipria**  
Powder pink | Rose poudre



**I09 - Mattone**  
Brick red | Rouge brique



**I10 - Arancio**  
Orange | Orange



**I11 - Ambra**  
Amber | Ambre

**Cat. I****NABUCCO**

100% Trevira CS  
 Peso: 920 gr/m<sup>2</sup>  
 Martindale 120.000 cicli  
 Ignifugo classe 1

100% Trevira CS  
 Peso: 920 gr/m<sup>2</sup>  
 Martindale 120.000 turns  
 Fire-retardant class 1 (one)

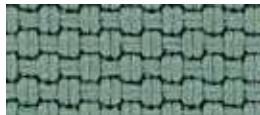
100% Trevira CS  
 Peso: 920 gr/m<sup>2</sup>  
 Martindale 120.000 cycles  
 Ignifuge classe 1



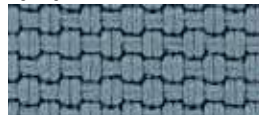
**I31 - Antracite**  
 Anthracite | Anthracite



**I32 - Tortora**  
 Grey beige | Gris tourterelle



**I33 - Acqua**  
 Water | Eau



**I35 - Avio**  
 Navy blue | Bleu avio



**I37 - Ocra**  
 Ocher | Ocre



**I34 - Verde**  
 Green | Vert



**I36 - Blu**  
 Blue | Bleu



**I38 - Cipria**  
 Powder pink | Rose poudre



**I39 - Bordeaux**  
 Bordeaux | Bordeaux

**Cat. I****ALLY by Flukso**

95% PET RICICLATO  
 5% PES  
 Peso: 420 gr/m<sup>2</sup>  
 Martindale 50.000 cicli  
 Ignifugo classe 1

95% RECYCLED PET  
 5% PES  
 Weight: 420 gr/m<sup>2</sup>  
 Martindale 50.000 turns  
 Fire-retardant class 1 (one)

95% PET RECYCLÉ  
 5% PES  
 Poids: 420 gr/m<sup>2</sup>  
 Martindale 50.000 cycles  
 Ignifuge classe 1



**I45 - Grigio**  
 Grey | Gris



**I47 - Avorio**  
 Ivory | Ivoire



**I49 - Muschio**  
 Moss green | Vert mousse



**I51 - Avio**  
 Navy blue | Bleu avio



**I52 - Ocra**  
 Ocher | Ocre



**I46 - Antracite**  
 Anthracite | Anthracite



**I48 - Tortora**  
 Grey beige | Gris tourterelle



**I50 - Petrolio**  
 Petroleum | Pétrole



**I53 - Arancio**  
 Orange | Orange



**I54 - Melograno**  
 Pomegranate | Grenade